

ARCH 500D

LED MIRROR

PRODUCT CODE
AR50D

SPECIFICATIONS

WIDTH	500mm
HEIGHT	900mm
DEPTH	35mm
WEIGHT	7kg
ORIENTATION	Portrait

LIGHTING SPECIFICATIONS

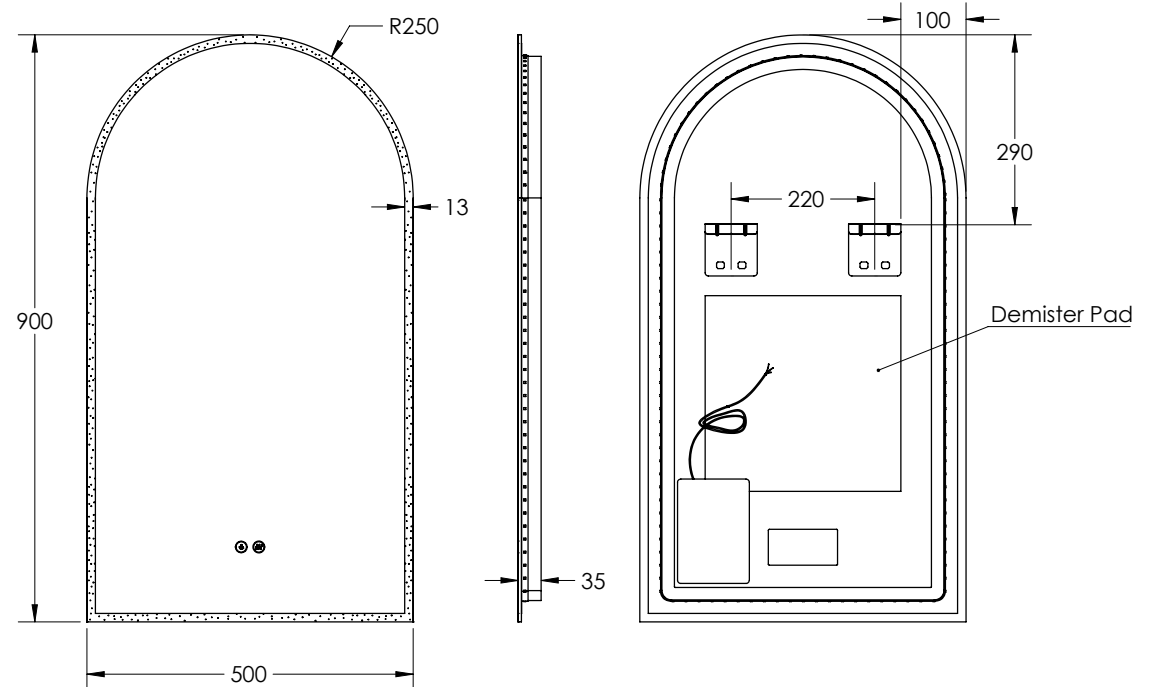
CCT	2700K - 6500K
CRI	>80

INSTALLATION

Wall mount
Hardwire
Input voltage: 220-240v 50Hz

FEATURES

Copper Free Mirror
LED Lighting (Adjustable Colour Temperature)
Touch Sensor
Demister with 1 Hour Auto Cut-off



Disclaimer: All LED Products requiring hardwiring must be installed by a licensed electrician in accordance with local regulations. Sizes are in mm and nominal and should be checked prior to installation. Actual colours may vary so please check colour samples before ordering. Installation is acceptance of our products. Installation of faulty, warped, chipped or damaged products will void our warranty.

ARCH 500D

LED MIRROR

PRODUCT CODE
AR50D

SPECIFICATIONS

WIDTH	500mm
HEIGHT	900mm
DEPTH	35mm
WEIGHT	7kg
ORIENTATION	Portrait

LIGHTING SPECIFICATIONS

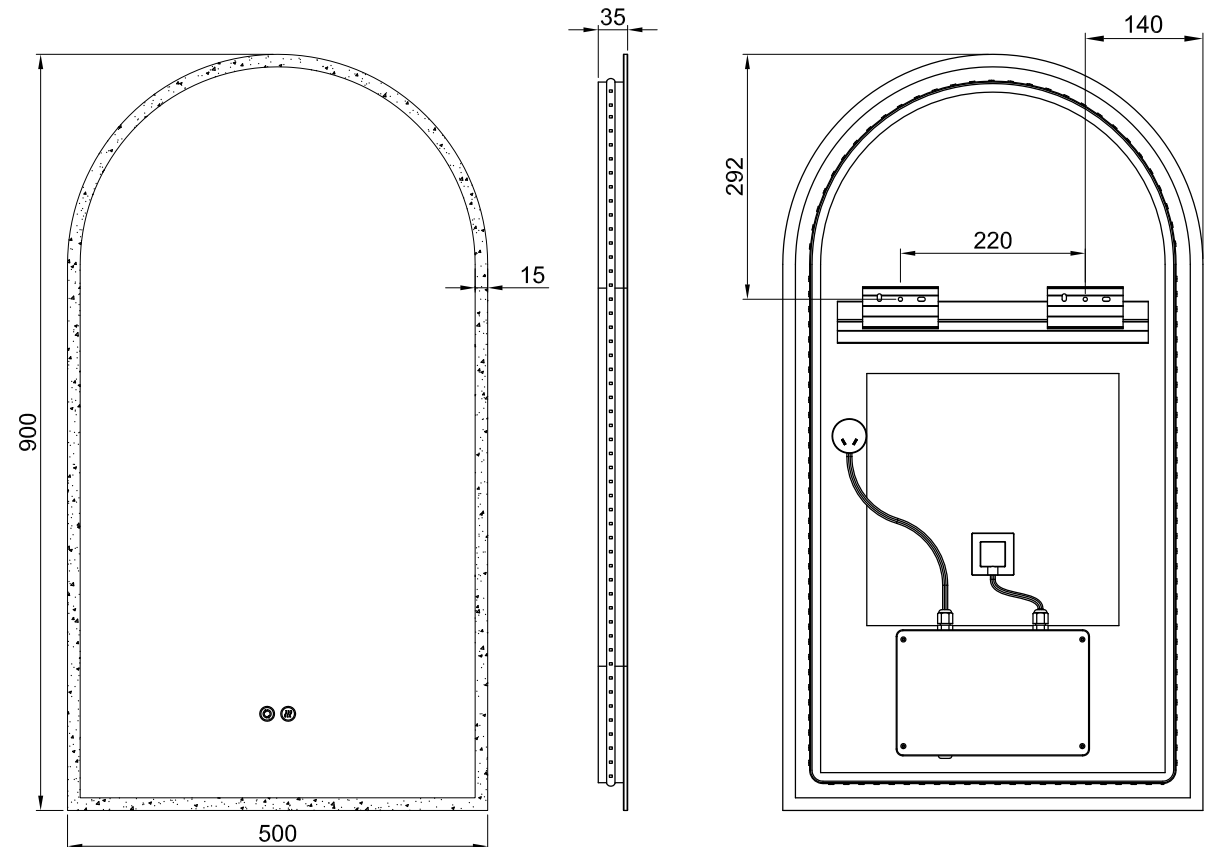
CCT	2700K - 6500K
CRI	>80

INSTALLATION

Wall Mount
Plug or Hardwire
Input Voltage: 220-240v 50Hz

FEATURES

Copper Free Mirror
LED Lighting (Adjustable Colour Temperature)
Touch Sensor
Demister with 1 Hour Auto Cut-off



Disclaimer: All LED Products requiring hardwiring must be installed by a licensed electrician in accordance with local regulations. Sizes are in mm and nominal and should be checked prior to installation. Actual colours may vary so please check colour samples before ordering. Installation is acceptance of our products. Installation of faulty, warped, chipped or damaged products will void our warranty.

ARCH 500D

LED MIRROR

PRODUCT CODE

AR50D

SPECIFICATIONS

WIDTH	500mm
HEIGHT	900mm
DEPTH	35mm
WEIGHT	7kg
ORIENTATION	Portrait

LIGHTING SPECIFICATIONS

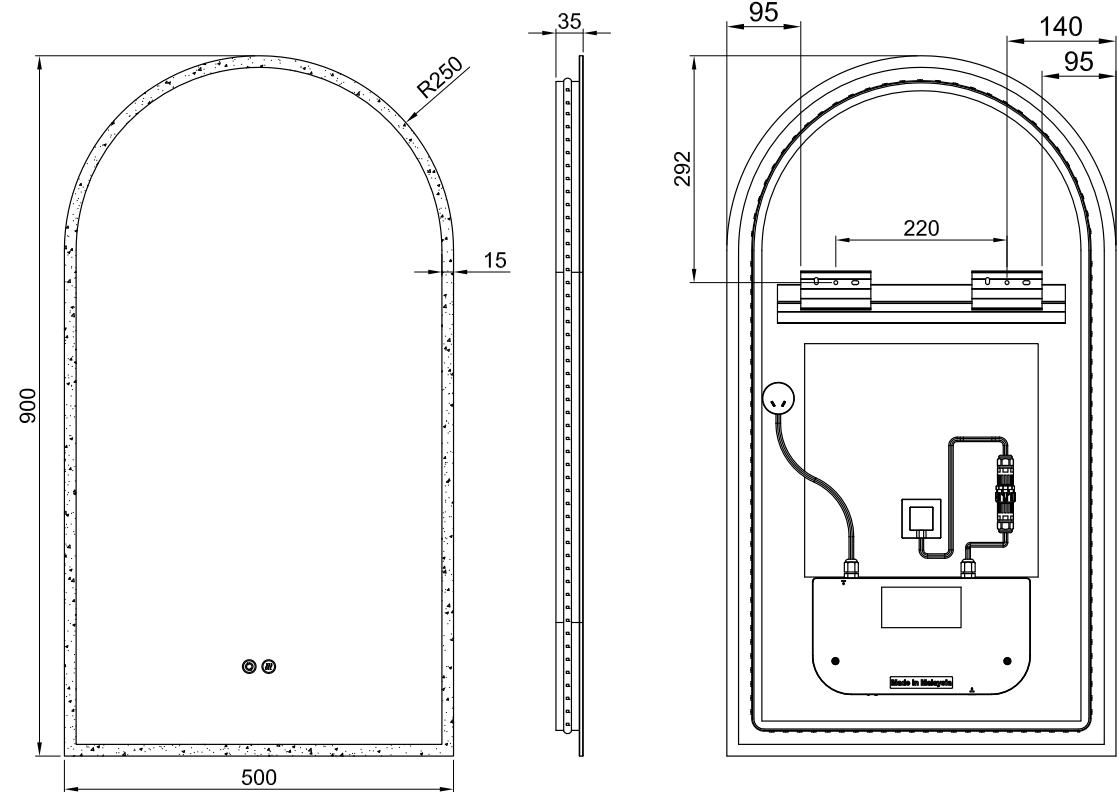
CCT	2700K - 6500K
CRI	>80

INSTALLATION

Wall Mount
Plug or Hardwire
Input Voltage: 220-240v 50Hz

FEATURES

Copper Free Mirror
LED Lighting (Adjustable Colour Temperature)
Touch Sensor
Demister with 1 Hour Auto Cut-off
Modubox™



Disclaimer: All LED Products requiring hardwiring must be installed by a licensed electrician in accordance with local regulations. Sizes are in mm and nominal and should be checked prior to installation. Actual colours may vary so please check colour samples before ordering. Installation is acceptance of our products. Installation of faulty, warped, chipped or damaged products will void our warranty.

Please check actual product in box for bracket type used

ARCH 500D

LED MIRROR WITH ALUMINIUM FRAME

SPECIFICATIONS

WIDTH	510mm
HEIGHT	910mm
DEPTH	40mm
WEIGHT	8kg
ORIENTATION	Portrait

LIGHTING SPECIFICATIONS

CCT	2700K - 6500K
CRI	>80

INSTALLATION

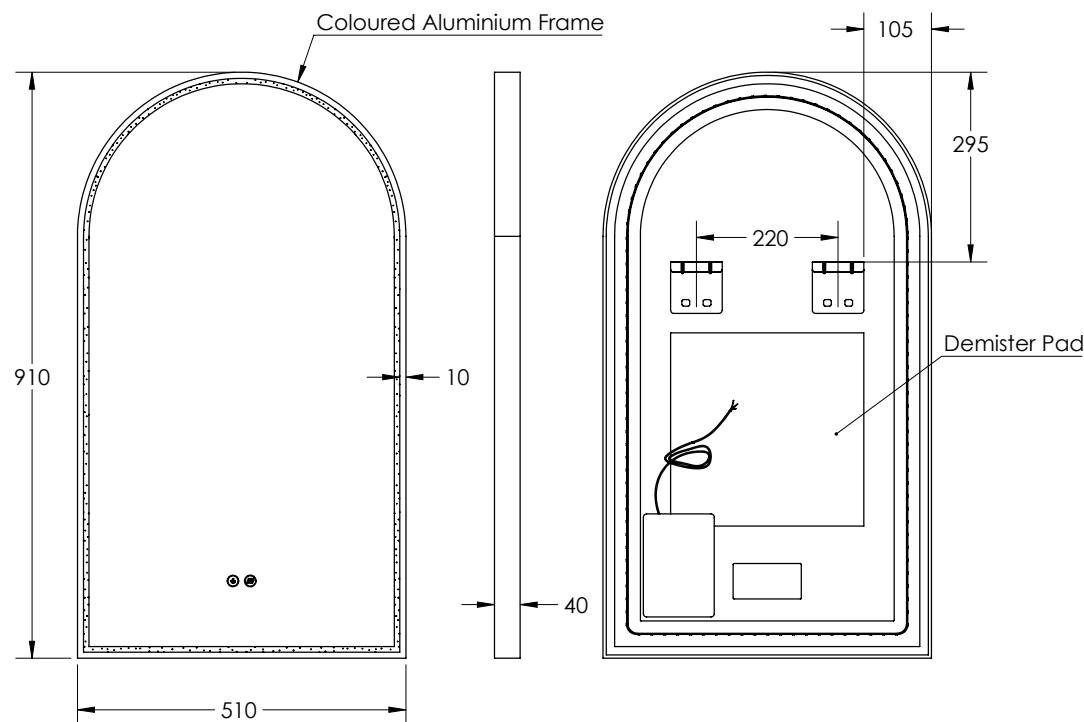
Wall mount
Hardwire
Input voltage: 220-240v 50Hz

FEATURES

Copper Free Mirror
LED Lighting (Adjustable Colour Temperature)
Frontlit
Touch Sensor
Demister with 1 Hour Auto Cut-off

FINISH		PRODUCT CODE
Baltic Brass		AR50D-BB
Brits Nickel		AR50D-BN
Cuban Bronze		AR50D-CB
Georgian Metal		AR50D-GM

FINISH		PRODUCT CODE
Manhattan Black		AR50D-MB
Milano White		AR50D-MW
Nordic Gold		AR50D-NG



Disclaimer: All LED Products requiring hardwiring must be installed by a licensed electrician in accordance with local regulations. Sizes are in mm and nominal and should be checked prior to installation. Actual colours may vary so please check colour samples before ordering. Installation is acceptance of our products. Installation of faulty, warped, chipped or damaged products will void our warranty.

13-15 Edison Road, Dandenong South VIC 3175
T (03) 9706 6663 E sales@remer.com.au W remer.com.au

Please check actual product in box for bracket type used (Plug/Hardwire)

ARCH 500D

LED MIRROR

SPECIFICATIONS

WIDTH	505mm
HEIGHT	905mm
DEPTH	40mm
WEIGHT	8kg
ORIENTATION	Portrait

LIGHTING SPECIFICATIONS

CCT	2700K - 6500K
CRI	>80

INSTALLATION

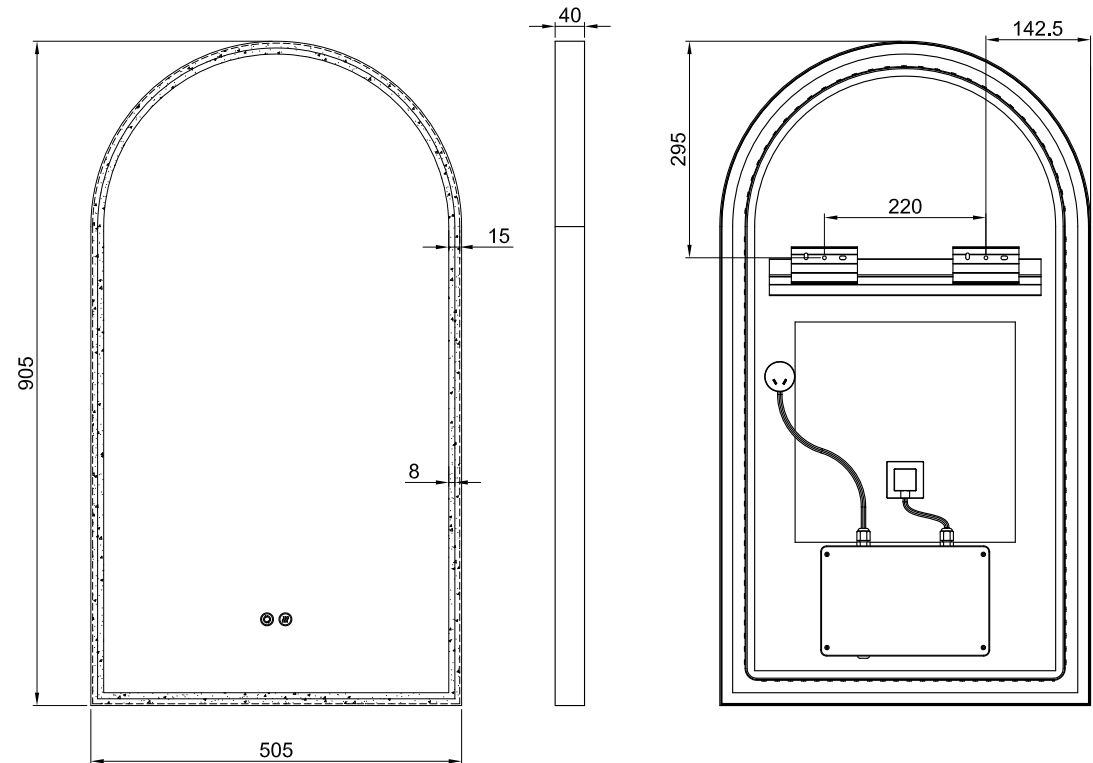
Wall Mount
Plug or Hardwire
Input Voltage: 220-240v 50Hz

FEATURES

Copper Free Mirror
LED Lighting
(Adjustable Colour Temperature)
Touch Sensor
Demister with 1 Hour Auto Cut-off

FINISH		PRODUCT CODE
Baltic Brass		AR50D-BB
Brits Nickel		AR50D-BN
Cuban Bronze		AR50D-CB
Georgian Metal		AR50D-GM

FINISH		PRODUCT CODE
Manhattan Black		AR50D-MB
Milano White		AR50D-MW
Nordic Gold		AR50D-NG



Disclaimer: All LED Products requiring hardwiring must be installed by a licensed electrician in accordance with local regulations. Sizes are in mm and nominal and should be checked prior to installation. Actual colours may vary so please check colour samples before ordering. Installation is acceptance of our products. Installation of faulty, warped, chipped or damaged products will void our warranty.

13-15 Edison Road, Dandenong South VIC 3175
T (03) 9706 6663 E sales@remer.com.au W remer.com.au

ARCH 500D

LED MIRROR

Please check actual product in box for bracket type used (Plug/Hardwire)
Modubox™

SPECIFICATIONS

WIDTH	505mm
HEIGHT	905mm
DEPTH	40mm
WEIGHT	8kg
ORIENTATION	Portrait

LIGHTING SPECIFICATIONS

CCT	2700K - 6500K
CRI	>80

INSTALLATION

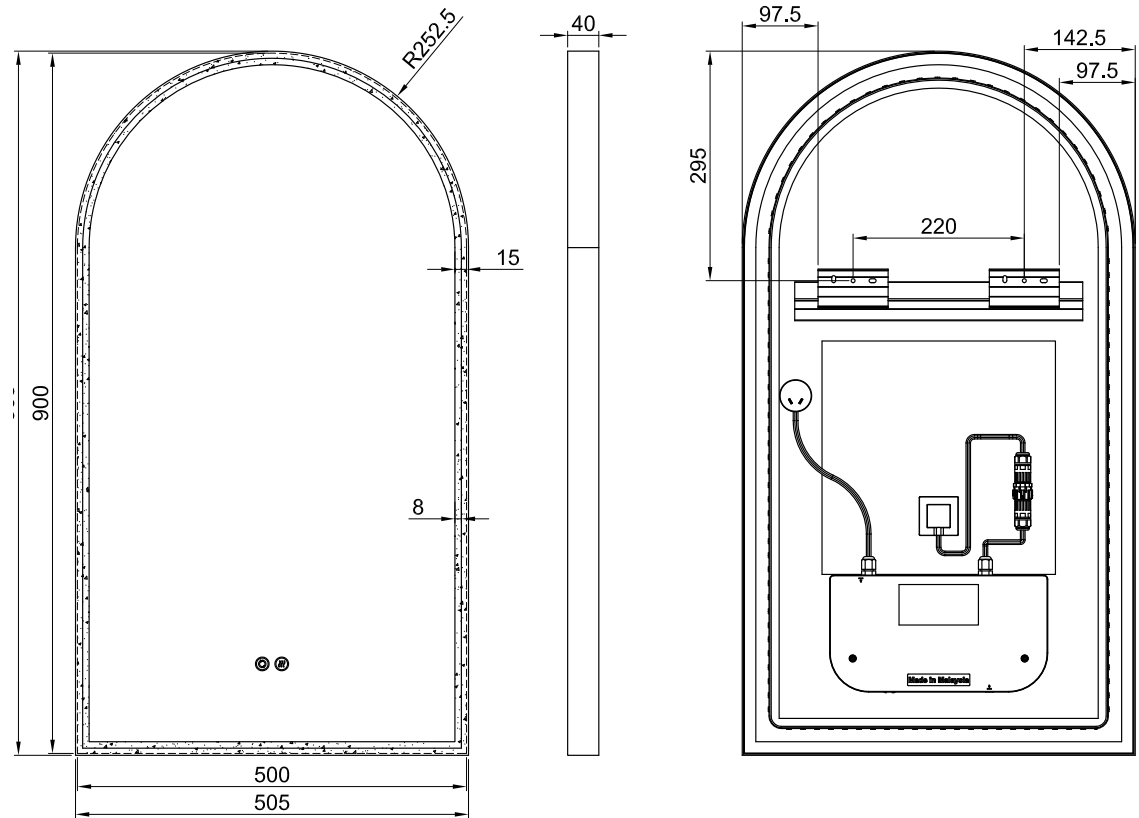
Wall Mount
Plug or Hardwire
Input Voltage: 220-240v 50Hz

FEATURES

Copper Free Mirror
LED Lighting (Adjustable Colour Temperature)
Touch Sensor
Demister with 1 Hour Auto Cut-off
Modubox™

FINISH	PRODUCT CODE
Baltic Brass	AR50D-BB
Brits Nickel	AR50D-BN
Cuban Bronze	AR50D-CB
Georgian Metal	AR50D-GM

FINISH	PRODUCT CODE
Manhattan Black	AR50D-MB
Milano White	AR50D-MW
Nordic Gold	AR50D-NG



Disclaimer: All LED Products requiring hardwiring must be installed by a licensed electrician in accordance with local regulations. Sizes are in mm and nominal and should be checked prior to installation. Actual colours may vary so please check colour samples before ordering. Installation is acceptance of our products. Installation of faulty, warped, chipped or damaged products will void our warranty.

13-15 Edison Road, Dandenong South VIC 3175
T (03) 9706 6663 E sales@remer.com.au W remer.com.au